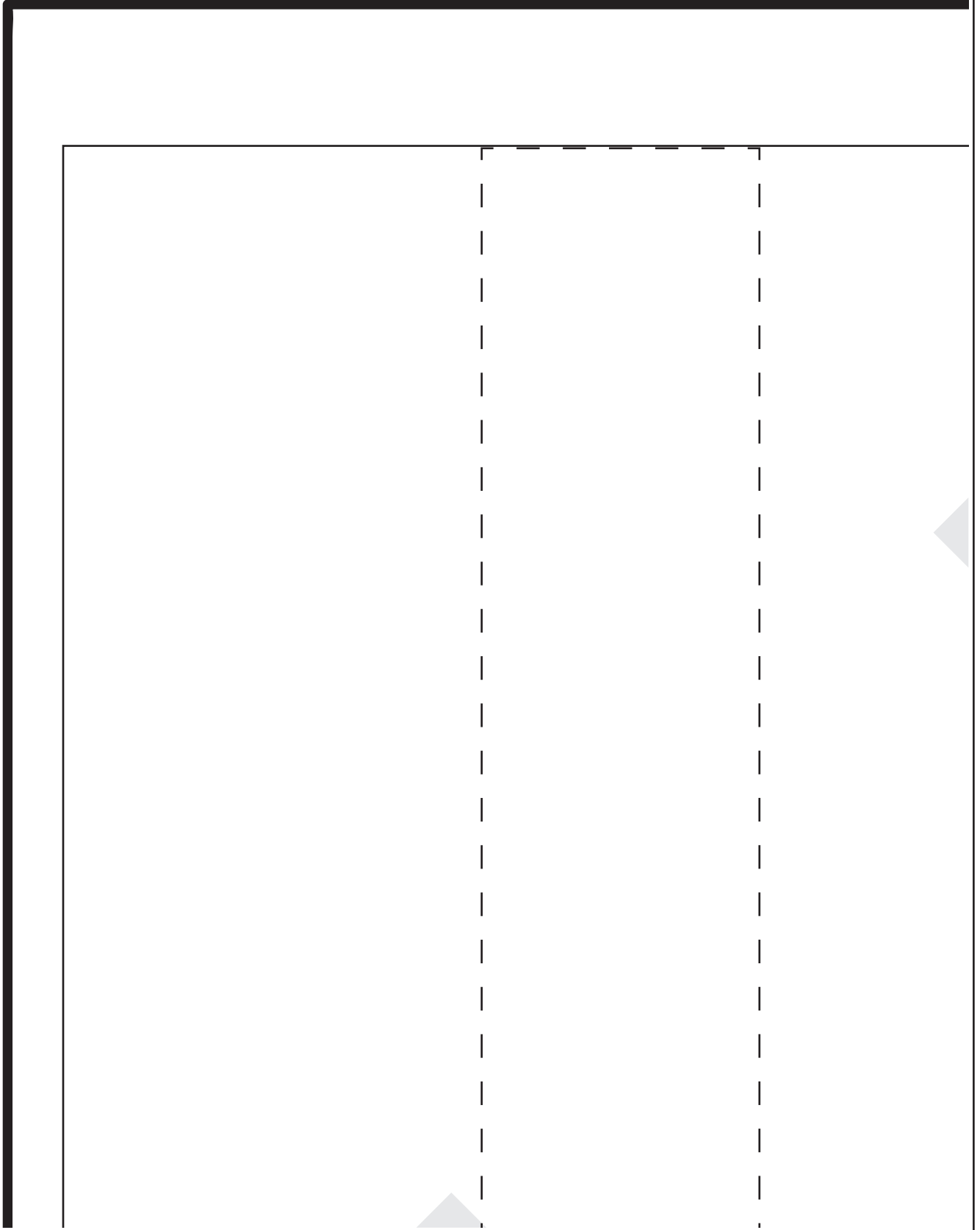
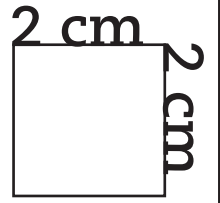
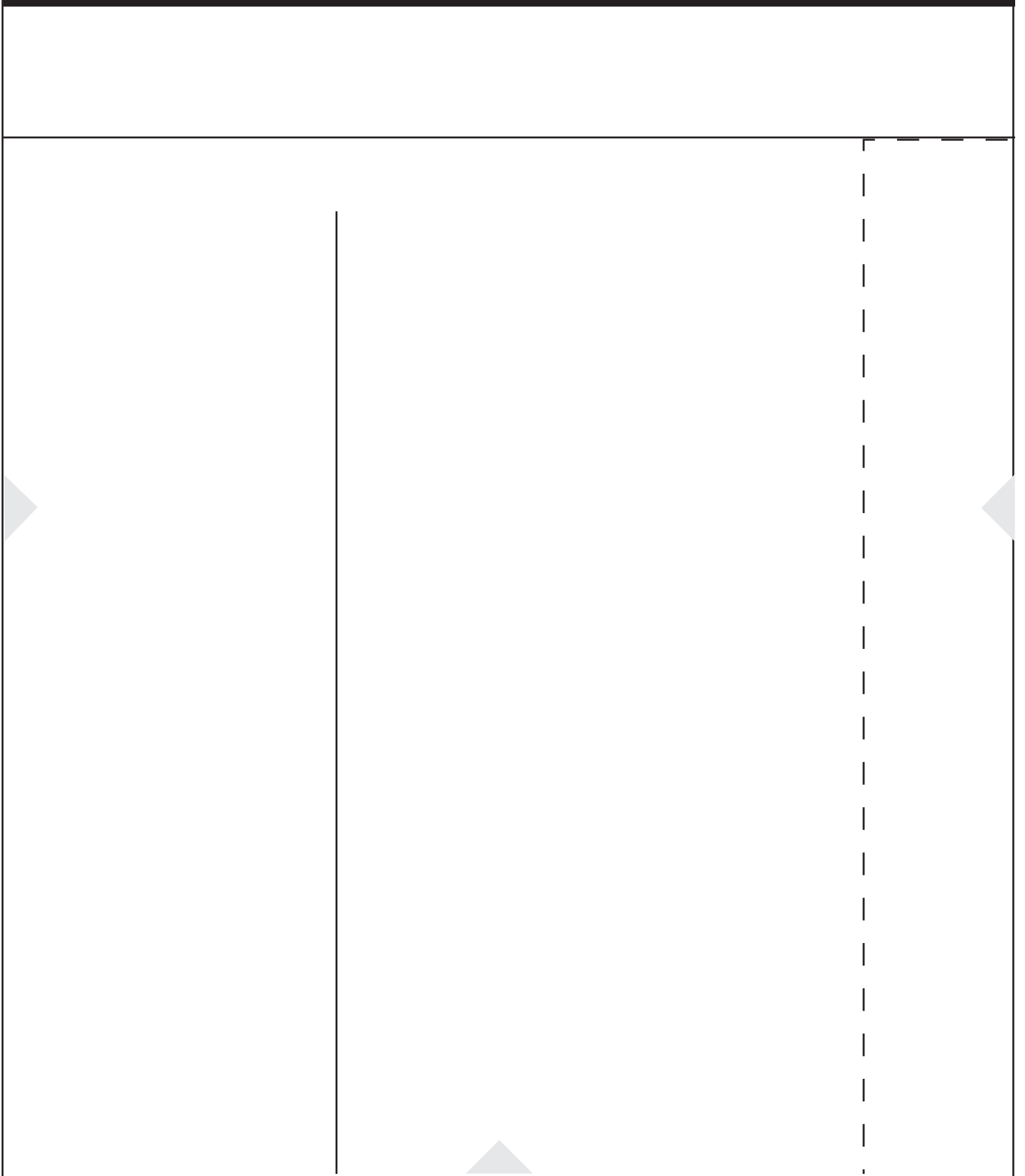


A1

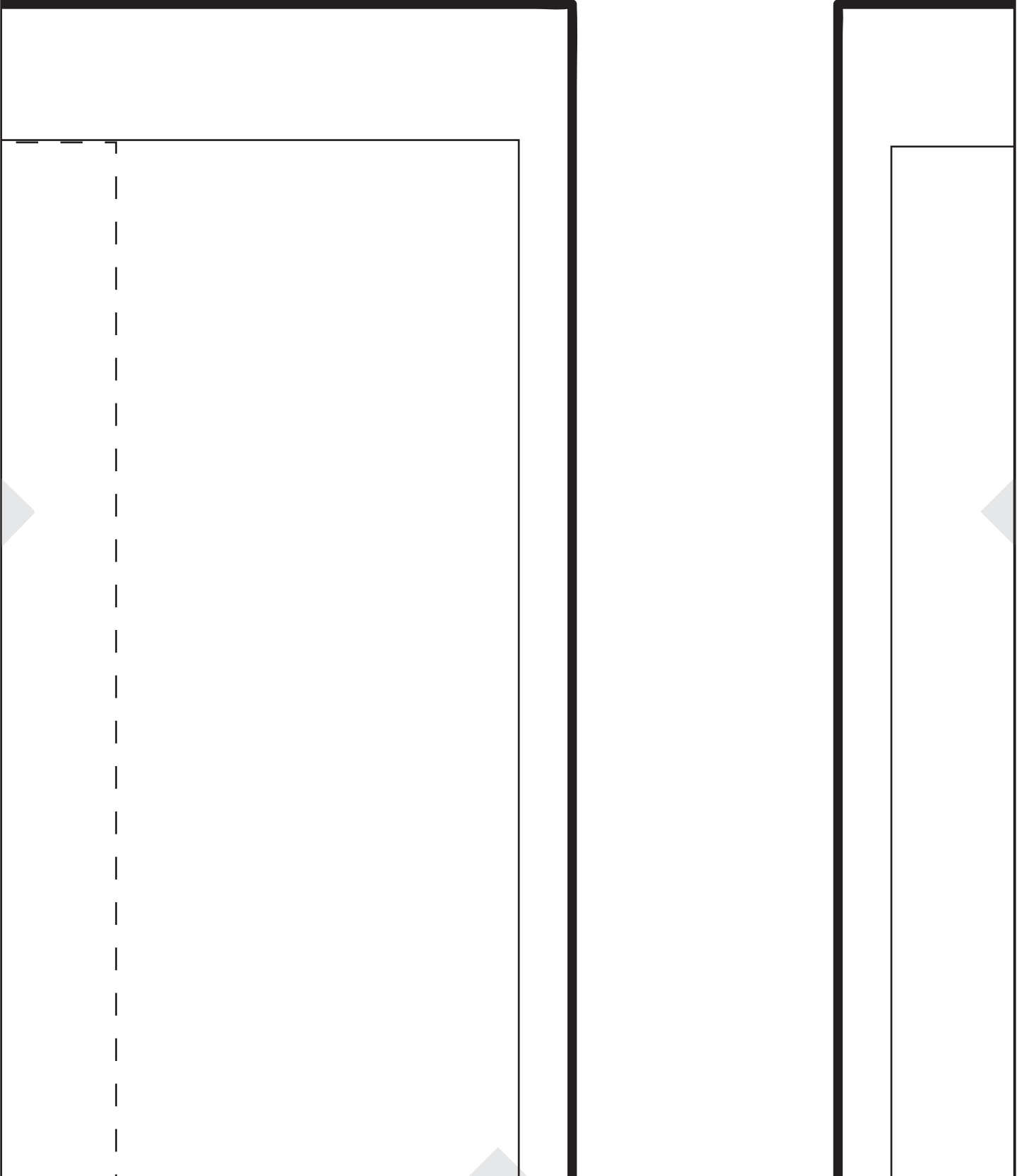
*Mon sac en toile de Jouy*



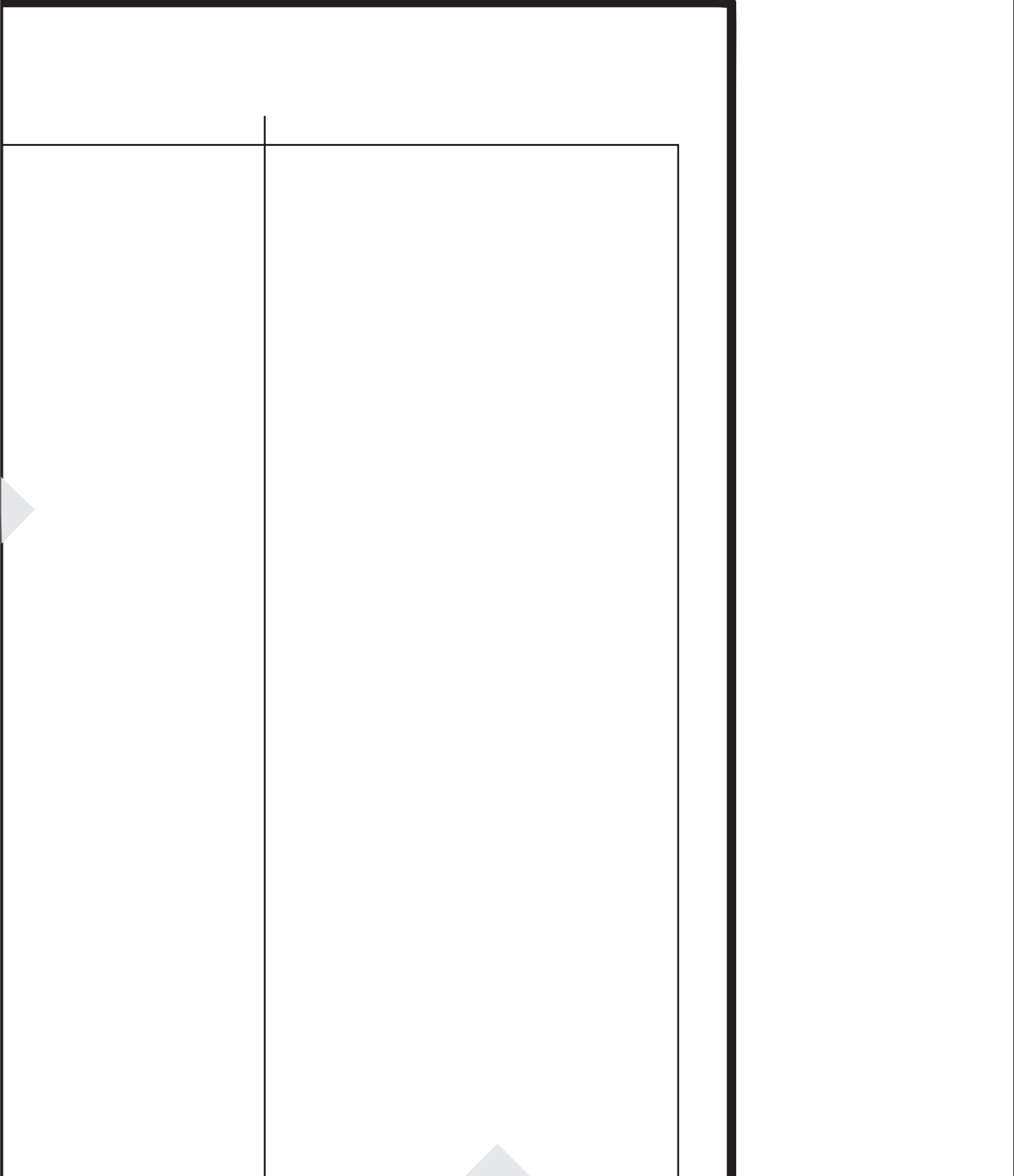
A2



A3



A4



B1

A large rectangular box for handwriting practice. It features a thick black border on the left and bottom sides. Inside, there are two vertical dashed lines and one horizontal dashed line at the bottom, creating a grid for letter formation. Small grey triangles are located at the top and bottom right corners of the box.

A second rectangular box for handwriting practice, similar in style to the first. It has a thick black border on the left and bottom sides. The interior is empty, providing space for practice. A small grey triangle is located at the bottom center of the box.

# B2



A  
Corps du sac  
à couper  
2 x dans le tissu principal  
2 x dans la doublure

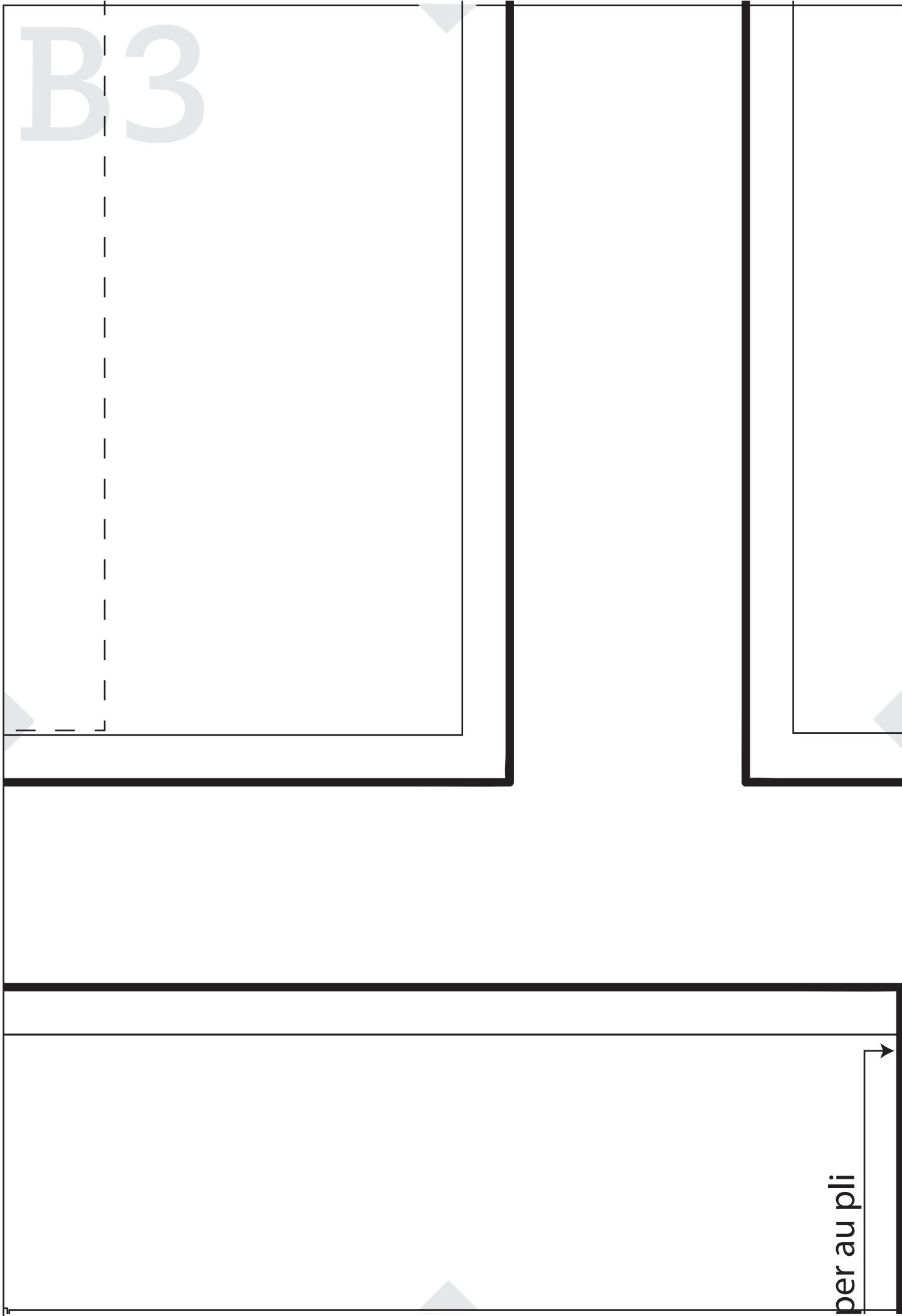
**Mondial**  
**TISSUS**

D

Anses  
à couper  
2 x dans le tissu principal

B3

per au pli



B4



C

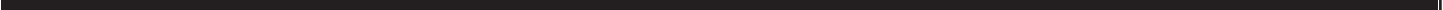
Côté du sac  
à couper

2 x dans le tissu principal  
2 x dans la doublure

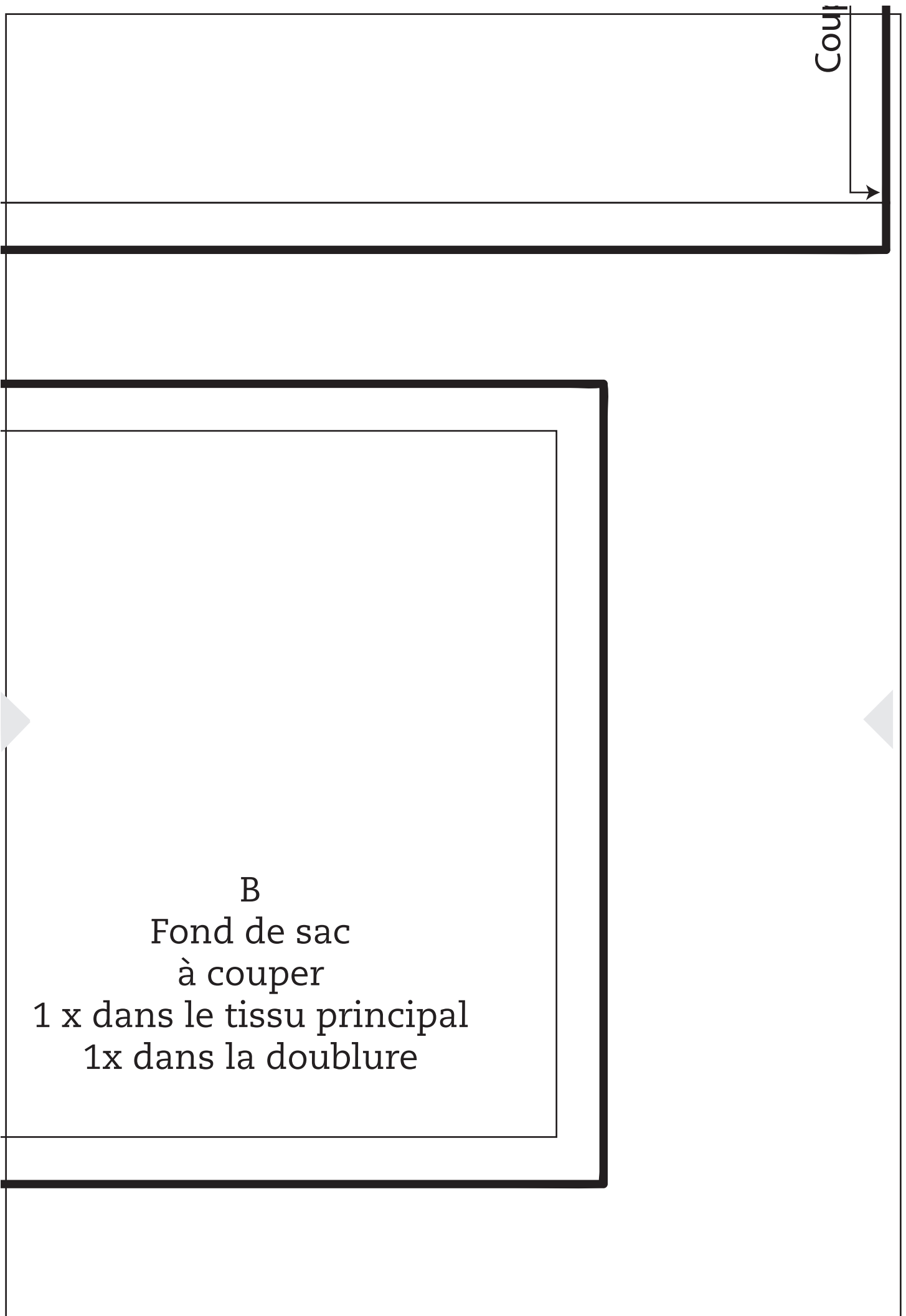


C1

C2



Couj



B

Fond de sac  
à couper

1 x dans le tissu principal  
1x dans la doublure

# C4

## Grille d'assemblage

